



# Meridian Solar Farm

EN010169

Volume 6

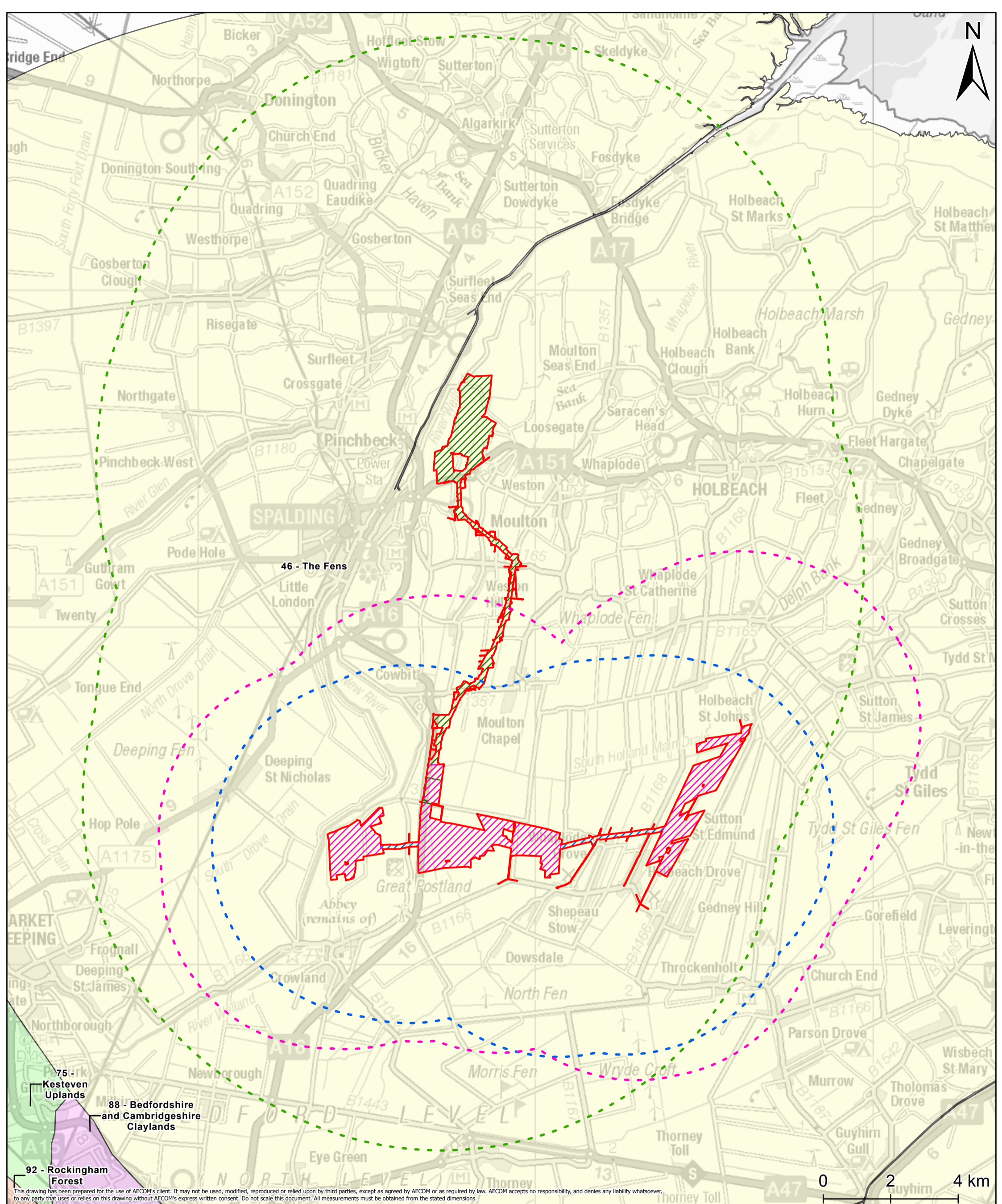
Environmental Statement

6.2 ES Figure 12-4: National  
Character Areas

APFP Regulation 5(2)(a)

Infrastructure Planning (Applications:  
Prescribed Forms and Procedure)  
Regulations 2009

March 2026



**Project Title**  
Meridian Solar Farm

**Map Title**  
Environmental Statement  
Figure 12-4: National Landscape  
Character Areas

Scale	Version	Drawn	Reviewed
1:100,000	0	LL	DH

**Legend**

- Order Limits
- Solar Development Areas
- Inter-Array Connections
- Grid Connection Route
- Solar Development Areas – 5km Buffer
- Inter-Array Connections – 5km Buffer
- Grid Connection Route – 10km Buffer

**National Character Areas**

- 46 - The Fens
- 75 - Kesteven Uplands
- 88 - Bedfordshire and Cambridgeshire Claylands
- 92 - Rockingham Forest

**Date:** 20/03/2026

**Copyright**  
Contains OS data © Crown Copyright and database right 2026  
Contains data from OS Zoomstack, Contains OS data © Crown copyright 2025.  
Reproduced from Ordnance Survey digital map data © Crown copyright 2025. All rights reserved. Licence number AC0000808122. © Natural England copyright. Contains Ordnance Survey data © Crown copyright and database right 2025.



This drawing has been prepared for the use of AECOM's client. It may not be used, modified, reproduced or relied upon by third parties, except as agreed by AECOM or as required by law. AECOM accepts no responsibility, and denies any liability whatsoever, to any party that uses or relies on this drawing without AECOM's express written consent. Do not scale this document. All measurements must be obtained from the stated dimensions.